

California Conversion Frame

Part # Ovation CU-250-CA, Encore CU-380-CA



Step by step installation

- Step 1 – Removal of Existing Dispenser
- Step 2 – Install Drip Tray
- Step 3 – Overlay Conversion Frame
- Step 4 – Mount Conversion Frame
- Step 5 – Plumb Dispenser
- Step 6 – Seal conduit penetrations

If changing the dispenser brand or model, use a brand new conversion frame. After a collision or drive-off, check the frame for damage. Replace it, DO NOT repair.

Annual Maintenance Guidelines

Check for chips or damage to the frame's paint. Re-coat exposed areas with Ameron AmerShield epoxy. Check all nuts / bolts that they are completely secured and that no nuts have backed off. Cover all anchor bolts with Bravo supplied black plastic cap. This will aid in preventing corrosion.

Includes: conversion frame, drip tray, anchor covers



Safety First. S. Bravo Systems, Inc. recommends adherence to standard safety procedures and precautions provided by your company and to follow the regulations and compliances by OSHA, local, state and federal regulations regarding the use of this product.

NOTE: Verify that the installed product meets the American Disabilities Act. The highest operable part should be located no higher than 48" inches above the floor as long as there are no obstructions.



Removal of Existing Dispenser, Install Drip Tray

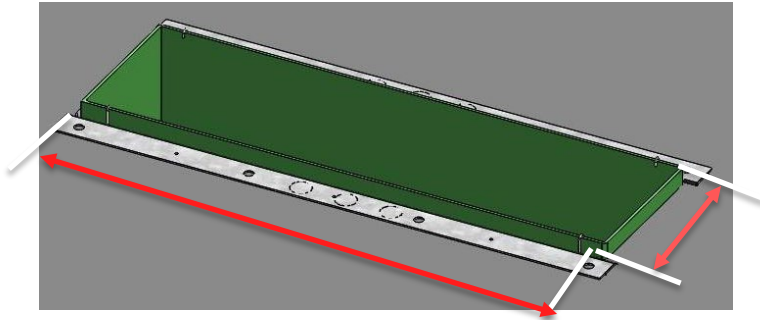


Fig.1

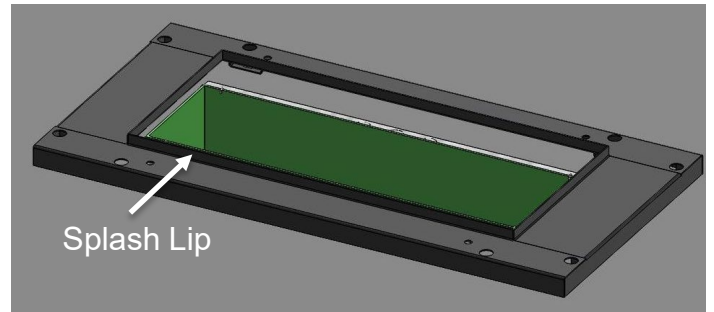


Fig.2

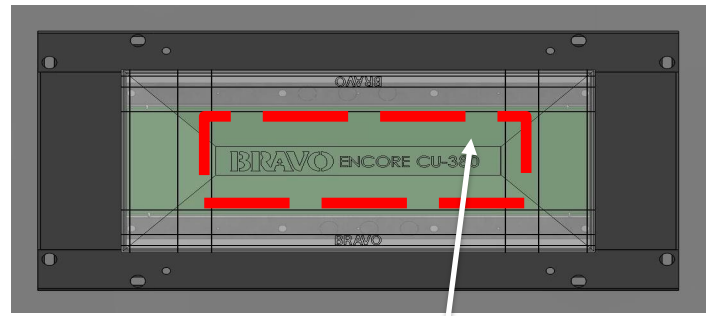
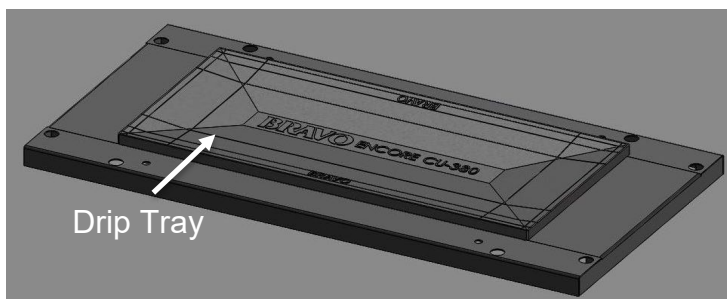


Fig.3

Cut mark should be minimum 1" smaller overall in length & width than UDC inside opening.

Step 1 – Removal of Existing Dispenser

1. Remove existing dispenser from its mounting points.

Step 2 – Install Drip Tray

1. Measure the inside length and width of the opening of the existing UDC. Evaluate whether the opening will be concentric or offset. (Fig.1) Use this information to plan accordingly.
2. Place the metal conversion frame on top of the UDC.
3. Place the drip tray over the metal conversion frame. Mark the cutting line and verify the angles are sized properly to redirect any possible leaks into the UDC. Be sure to leave 1" minimum in all directions to allow the drip tray to contain any fluid into the UDC.
4. Use a utility knife to cut an opening on the plastic tray. (Fig. 3)



Overlay and Mount Conversion Frame, Plumb Dispenser

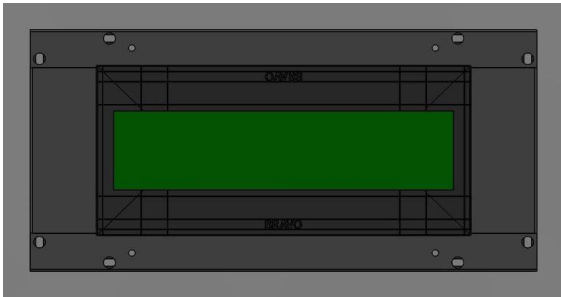
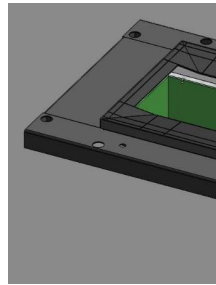


Fig.5



Step 3 – Overlay Conversion Frame

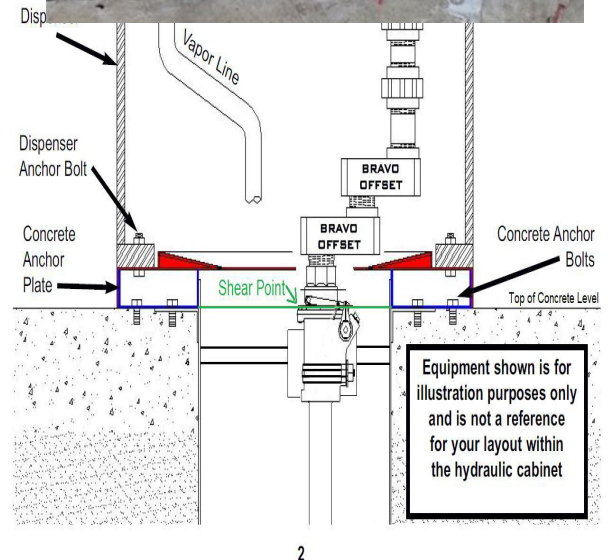
1. Once the drip tray has been cut to the proper dimensions install the tray over the conversion frame's water splash lip. (Fig. 5)
2. If there is any interference from conduit and piping, the tray may be trimmed. (Fig.6)

Step 4 – Mount Conversion Frame

1. Align and secure the conversion frame to the island / concrete with minimum 1/2"Ø diameter bolts. A minimum of eight (8) anchor bolts must be secured directly to concrete. Use provided plastic caps to plug all concrete anchoring bolt holes after they are fastened. Concrete anchoring bolts must not be corroded or compromised and should be embedded adequately. Follow your anchor bolt product manual or manufacturers' recommendations to install them properly.

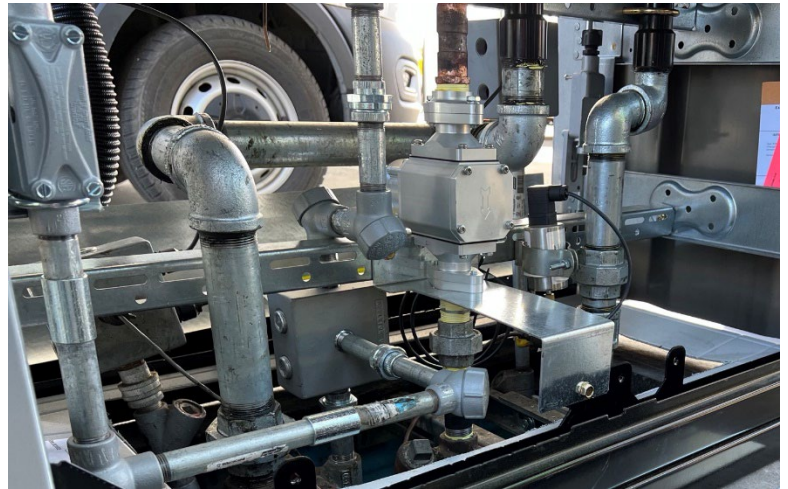
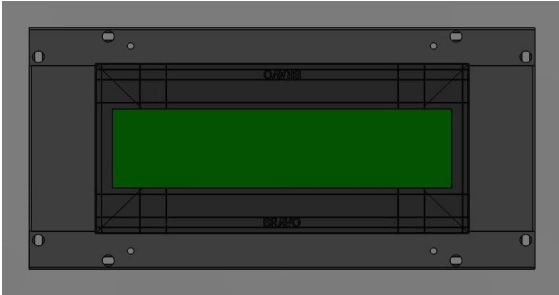
Step 5 – Plumb Dispenser

1. Pre-plumb all product inlets and vapor recovery lines with offsets and/or rigid pipe and elbows as necessary. Adjust electrical conduits to line up with the new dispenser as necessary.
2. Position and bolt down the dispenser to the conversion frame with the anchor bolts provided.





Overlay and Mount Conversion Frame, Plumb Dispenser



Step 6 – Conduit Penetration

The California Universal Conversion comes with a Drip Tray made from Kydex which allows Bravo epoxy to bond to it. This will permit for on site adjustments for E-Y Connectors and conduits positions which are within the area of the drip tray to be sealed. By sealing the conduit penetration, it controls and redirects the potential drip to the desired secondary containment location.

Conv-Retrofit-Plate 5x25

Used to seal penetrations when installing Bravo Conversion Frame includes .(1) FRP panel 5" x 25". per sump (1) Bravo Standard Epoxy to bond to prepare surface. CA SWRCB Approved Retrofit kit





WARRANTY

All Bravo products MUST be installed by a Bravo Certified contractor. Information contained in all Bravo literature is subject to change without notice. Bravo does not assume responsibility for liability for loss, damage or expenses resulting from installation, operation use or maintenance from this manual. By installing this product, you agree to S. Bravo Systems warranty terms.

LIMITED WARRANTY

All containment systems sold by S. Bravo Systems, Inc. are warranted to be free from defects in material and workmanship for a period of one year from date of purchase. This warranty will be limited to the repair and replacement of Bravo parts only and will exclude all claims for labor or consequential damage. No other express warranties given and no affirmation of S. Bravo Systems, Inc. or its agents and/or representatives, by words or action, will constitute a warranty. It is expressly agreed that this warranty will be in lieu of all warranties of fitness and in lieu of the warranty of merchantability.

This warranty is void if there is any evidence of modification, abuse, negligence, or improper installation. If any fittings or components, other than S. Bravo systems approved fittings or components, are used in conjunction with any S. Bravo systems product, the warranty pertaining to these products is immediately void.

Trent Caster
Western Regional Sales Manager
tcaster@sbravo.com
303.359.8862

Bob Hyatt
Eastern Regional Sales Manager
bhyatt@sbravo.com
239.888.6565

AK, AR, AZ, CA, CO, HI, ID, LA,
MS, MT, NM, NV, OK, OR, WEST TN, TX, UT, WA, WY

AL, CT, FL, GA, IA, IL, IN, KS, KY, MA, ME, MI, MD, MO, NC,
ND, NH, NJ, NY, OH, PA, SD, SC, EAST TN, VA, VT, WI, WV



INNOVATIVE SOLUTIONS FOR SECONDARY CONTAINMENT

Commerce, CA | Lexington, TN
800.282.7286 | www.sbravo.com



When using and installing Bravo products, please consult local, state and federal regulations. Installers of Bravo products must be Bravo-certified.

