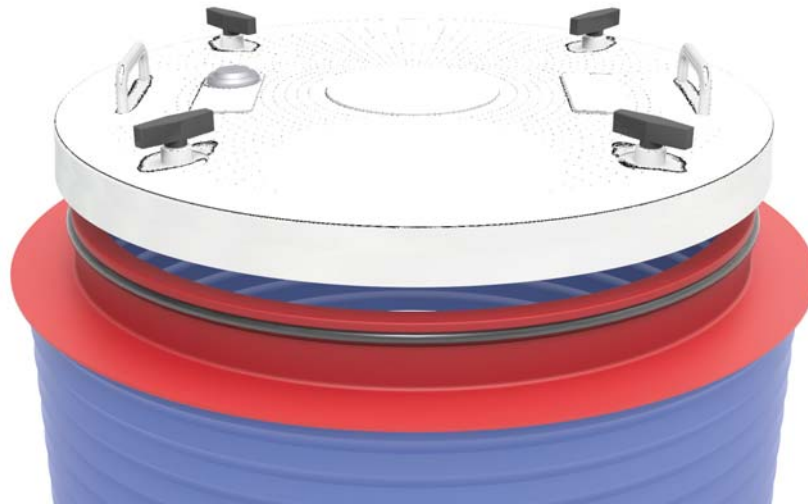


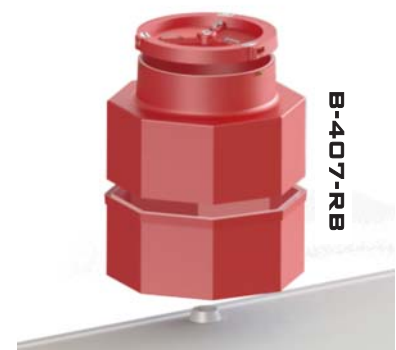
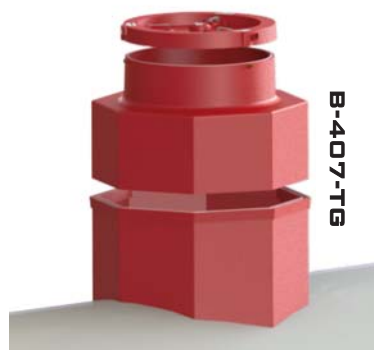
INSTALLATION INSTRUCTIONS

RCP-SERIES RETROFIT

FOR POLY/FRP CONTAINMENT SUMPS



Water-Tight upgrade for most SingleWall & DoubleWall



INCLUDED

- 1x SNAP-LOCK COVER
- 1x RETROFIT REDUCER W/FLANGE O-RING
- 1x 250ML ADHESIVE KIT PE
- 12x 12"x2" C-VEIL
- 3OR4 x EP-100-RF (7oz EPOXY ADHESIVE)
- 1x SAND KIT

1x 3"POLY CHAMFER ROLLER

ii-RCP-SNAPLOCK-RETROFIT-15



WWW.SBRAVO.COM
800-AT-BRAVO

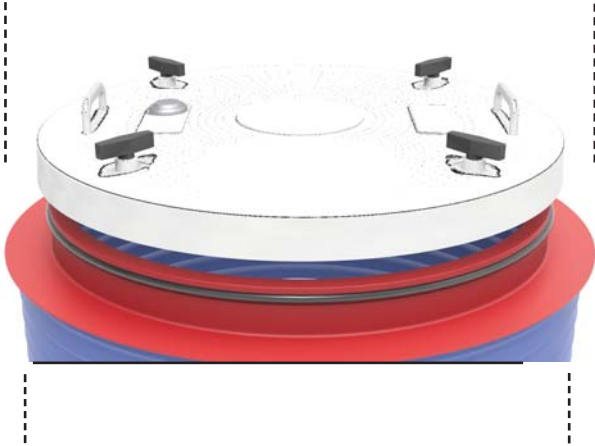


MANDATORY

All Bravo products MUST be installed by a **Bravo Certified Installer**. Get Certified at www.sbravo.com/cert

TABLE OF CONTENTS

1) Pre-Check and Test Fit.....	p. 3
2) Clearances.....	p. 3
3) Preparation Work on Sump.....	p. 4
4) Poly Primer Coat Prep.....	p. 4
5) Poly Primer Application.....	p. 4
6) Glueing Reducer to Cover Assembly.....	p. 5
7) Final Assembly.....	p. 6



Consult Datasheet for various models and PDF CAD pack for dimensions / permitting.

www.sbravo.com/slretro

NOTICE

By installing this product, you agree to the warranty terms found at : www.sbravo.com/warranty

SAFETY FIRST! S. Bravo Systems, Inc. urges you to carefully adhere to the normal safety procedures and precautions followed by your company. Please follow the mandates and compliances decreed by OSHA, local, State and federal regulations regarding the use of this product.

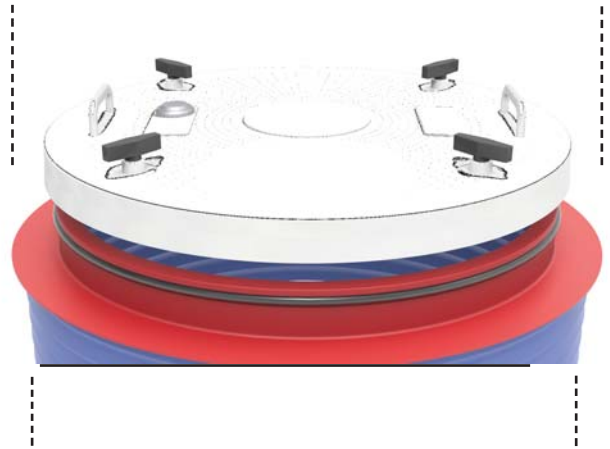
LIMITED WARRANTY

All containment systems sold by S. Bravo Systems, Inc. are warranted to be free from defects in material and workmanship for a period of one year from date of purchase. This warranty will be limited to the repair and replacement of Bravo parts only and will exclude all claims for labor or consequential damage. No other express warranties given and no affirmation of S. Bravo Systems, Inc., or its agents and/or representatives, by words or action, will constitute a warranty. IT IS EXPRESSLY AGREED THAT THIS WARRANTY WILL BE IN LIEU OF ALL WARRANTIES OF FITNESS AND IN LIEU OF THE WARRANTY OF MERCHANTABILITY.

This warranty is void if there is any evidence of modification, abuse, negligence, or improper installation. If any fittings or components, other than S. Bravo Systems approved fittings or components, are used in conjunction with any S. Bravo Systems product, the warranty pertaining to these products is immediately void.

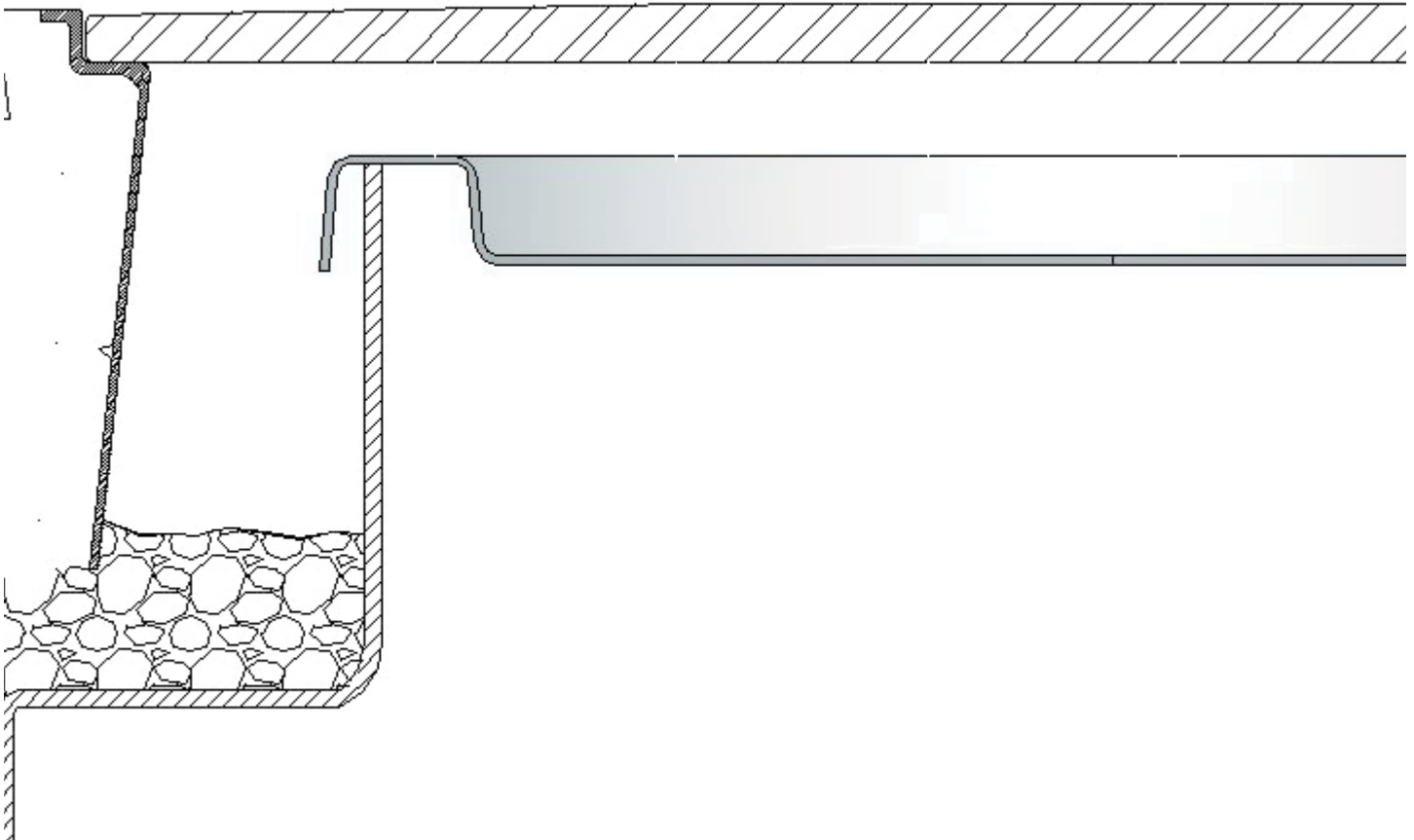
1) Pre-Check and Test Fit

Verify you have all components. Before installing any of the components dry-fit everything to ensure a 1" lap between the Poly and FRP oring reducers. Cut down as necessary. Make sure red frp reducer is sanded. Sand underside of flange to ensure good bond to poly sump.



2) Clearances

Cover needs a minimum clearance of 1-1/2" from the top of Cover (fully assembled) to the Underside of the existing manway. Cut reducer height down if necessary.



3) Preparation Work on Poly Sump



Sand inside of the Poly reducer 2" along the inside circumference and top of lip and dust off.

4) Poly Sump Primer Coat Prep



Place a strip of C-Veil on the provided cardboard and apply a generous amount of the PE adhesive onto the strip.



Roll out the PE adhesive using the provided chamfer roller. Roll until the strip of C-Veil is well saturated.

5) Poly Sump Primer Coat Application



A.) Place the strip over the abraded surface



B.) Fold the remaining C-Veil back and over the lip of the poly reducer



C.) Roll C-Veil to reducer till smooth, (no bubbles)



D.) Overlap next C-Veil by 1/2" following Steps 4-5, Repeat to cover entire reducer.

6) Glueing Reducer to Cover Assembly

A - Immediately Mix the Epoxy Adhesive EP-100-RF



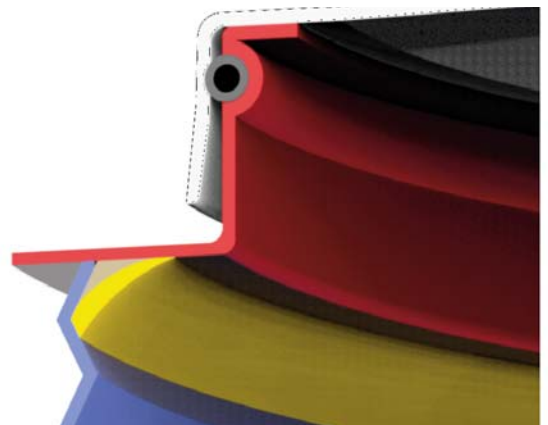
B - Spackle a generous amount of epoxy over the top edge of the poly reducer all around its circumference.



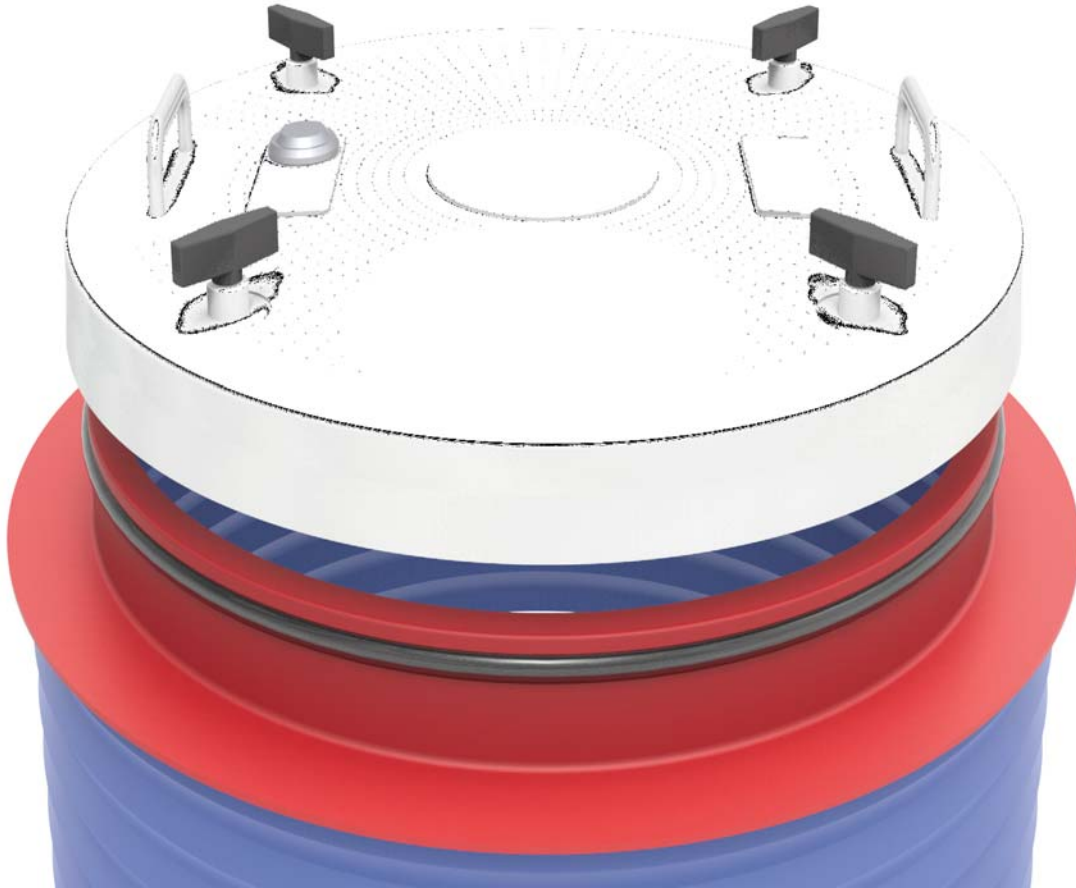
C - Place the fiberglass reducer over the existing poly reducer making sure that the I.D. of the fiberglass reducer aligns with the poly reducer. Push the fiberglass Reducer firmly down onto poly reducer.



B - Spackle a generous amount of epoxy over the top edge of the poly reducer all around its circumference.



8) Final Assembly



Apply Snap Lock lid and apply weight to ensure a good bond between the two reducers. Allow the epoxy and PE adhesive to fully cure. Do not disturb while curing.