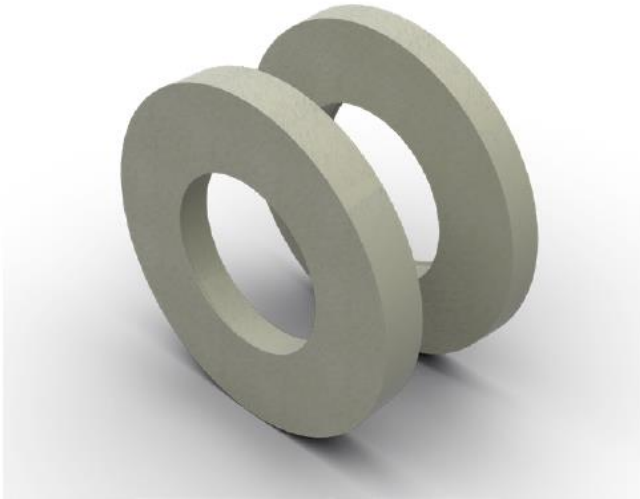




Flange Entry Fitting: Round Sump Walls

NEW CONSTRUCTION FITTING



SPECIFICATIONS:

- Quality fiberglass construction and bonded installation provides an extremely long service life compared to flexible entry fittings
- 30 year corrosion warranty
- Handles up to 5 degrees of angle
- Fitting includes set screws, no clamp required

OVERVIEW:

Double-sided flange fiberglass pass-through entry fittings for single wall fiberglass round sump wall.

Part #	Description	EP100 Epoxy Req'd	Hole Saw Size
F-07-R	3/4" galvanized conduit, double-sided pass-through for round walls	1	2"
F-07R-R	3/4" PVC coated conduit, double-sided pass-through for round walls	1	2"
F-10-R	1" galvanized conduit, double-sided pass-through for round walls	1	2"
F-10R-R	1" PVC coated conduit, double-sided pass-through for round walls	1	2"
F-20-R	2" Single Wall fiberglass pipe, double-sided pass-through for round walls	1	3"
F-30-R	3" Single Wall fiberglass pipe, double-sided pass-through for round walls	2	4"
F-40-R	4" Single Wall fiberglass pipe, double-sided pass-through for round walls	2	5"
F-60-R	6" Single Wall fiberglass pipe, double-sided pass-through for round walls	4	8"
F-20L-R	2" LCX fiberglass pipe, double-sided pass-through for round walls	1	3"
F-30L-R	3" LCX fiberglass pipe, double-sided pass-through for round walls	2	4"
F-40L-R	4" LCX fiberglass pipe, double-sided pass-through for round walls	2	5"

Innovative Solutions for Secondary Containment

800-282-7286 | www.sbravo.com



Flange: Round Sump Walls

NEW CONSTRUCTION FITTING

Parts and Accessories	
T-FC-20	One pair of clamps for 2" FRP and 2" LCX fittings - Round FF series
T-FC-30	One pair of clamps for 3" FRP and 3" LCX fittings-Round FF Series
T-FC-40	One Pair of Clamps for 4" FRP and 4" LCX fittings - Round FF Series
EP100	Bravo Epoxy (6oz Epoxy 1oz Catalyst)