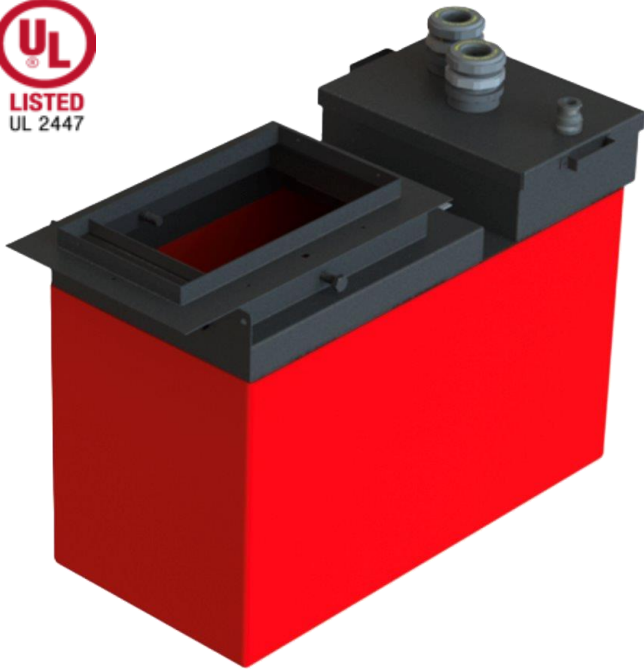




# A8000 Series

ABOVEGROUND



## SIZES:

- 20.5" width at the base

\*See page 2 for dimensions drawing and chart

## MATERIALS:

- Galvannealed steel and fiberglass

## OVERVIEW:

Bravo's A8000 Series combo UDC, vent transition sump combines a quality FRP UDC with a transition sump in one compact package. Ideal for AST applications where space is limited. The A8000 allows above ground pipe entry next to the dispenser allowing drive up access to both fueling points on the dispenser. Includes factory installed AST fittings for simple installation. Fuel compatible resin doesn't require gel coat for chemical resistance and all metal work is epoxy coated galvanneal steel. Available in both single wall and double wall VPH configurations. Double wall models are California VPH compliant and triennial testing exempt.

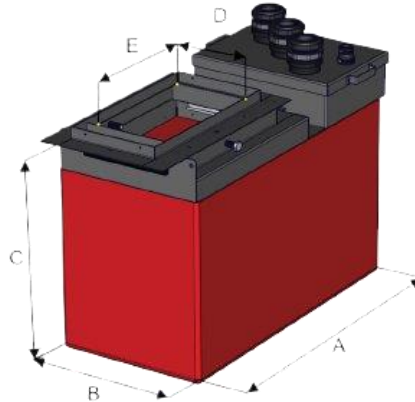
## SPECIFICATIONS:

- UDC & transition sump in one
- Saves space in commercial AST applications
- Allows access to both fueling points on a dispenser
- Heavy gauge epoxy coated galvanneal steel metal work
- VPH models can be constantly monitored making them triennial testing exempt
- Double wall ships under 20" HG vacuum



# A8000 Series

ABOVEGROUND



## A8000 Single Wall

Dispenser Model	Part #	Description	A	B	C	D	E
Gasboy Atlas X (9XXXG)	A8678-S30-11	Dispenser containment for Gasboy Atlas X with AST supply fitting, alternatively used as combination UDC / Vent Sump, 1 AST line (1-1/2" and or 2")	42"	20.5"	30.5"	14"	26.5"
Gasboy Atlas X (9XXXG)	A8678-S30-22	Dispenser containment for Gasboy Atlas with AST supply fitting, alternatively used as combination UDC / Vent Sump, 2 AST line (1-1/2" and or 2")	42"	20.5"	30.5"	14"	26.5"
Wayne Reliance	A8210-S30-11	Dispenser containment for Reliance Select with AST supply fitting, alternatively used as combination UDC / Vent Sump, 1 AST line (1-1/2" and or 2")	42"	20.5"	30.5"	15"	27.25"
Wayne Reliance Select	A8210-S30-22	Dispenser containment for Reliance Select with AST supply fitting, alternatively used as combination UDC / Vent Sump, 2 AST line (1-1/2" and or 2")	42"	20.5"	30.5"	15"	27.25"

## A8000 Double Wall

Dispenser Model	Part #	Description	A	B	C	D	E
Gasboy Atlas X (9XXXG)	A8678-D30-11	Doublewall VPH Dispenser containment for Gasboy Atlas X, EAST supply fitting, alternatively used as combination UDC / Vent/Trans Sump, 1 AST line (1-1/2" and or 2")	42"	20.5"	30.5"	14"	26.5"
Gasboy Atlas X (9XXXG)	A8678-D30-22	Doublewall VPH Dispenser containment for Gasboy Atlas X, AST supply fitting, alternatively used as combination UDC / Vent/Trans Sump, 2 AST line (1-1/2" and or 2")	42"	20.5"	30.5"	14"	26.5"
Wayne Reliance	A8210-D30-11	Doublewall VPH Dispenser containment for Reliance Select, EAST supply fitting, alternatively used as combination UDC / Vent/Trans Sump, 1 AST line (1-1/2" and or 2")	42"	20.5"	30.5"	15"	27.25"
Wayne Reliance Select	A8210-D30-22	Doublewall VPH Dispenser containment for Reliance Select, AST supply fitting, alternatively used as combination UDC / Vent/Trans Sump, 2 AST line (1-1/2" and or 2")	42"	20.5"	30.5"	15"	27.25"

### Parts and Accessories

BK-8000	Boss-Mount Bracket for B8000 & B9000 Series
BK-B2	Vapor Boss-Mount & U Bolt Mount Bracket for B8000 & B9000 Series (MC-12/20)
VF-1	Custom Factory-installed pass-through AST entry for 1" and 3/4" pipe
VF-2	Custom Factory-installed pass-through AST entry for 2" pipe
EBS	Rigid electrical bulkhead w/ES1 reducer for 1" & 3/4" conduit. Field Installed.

**Innovative Solutions for Secondary Containment**

800-282-7286 | [www.sbravo.com](http://www.sbravo.com)