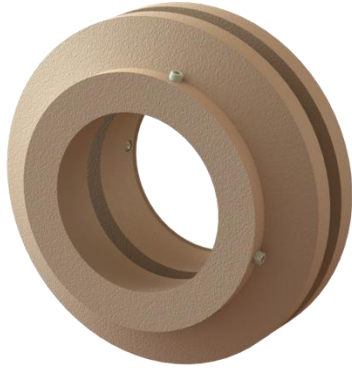




Flange Entry Fitting: Flat Sump Walls

NEW CONSTRUCTION FITTING



OVERVIEW:

Double-sided flange fiberglass pass-through entry fittings for single wall fiberglass flat sump wall.

SPECIFICATIONS:

- Quality fiberglass construction and bonded installation provides an extremely long service life compared to flexible entry fittings
- 30 year corrosion warranty
- Handles up to 5 degrees of angle
- Brings the secondary pipe into the interior of the containment sump
- Fitting includes set screws, no clamp required

Part #	Description	EP100 Epoxy Req'd	Hole Saw Size
F-07-F	3/4" galvanized conduit, double-sided pass-through for flat walls	1	2"
F-07R-F	3/4" PVC coated conduit, double-sided pass-through for flat walls	1	2"
F-10-F	1" galvanized conduit, double-sided pass-through for flat walls	1	2"
F-10R-F	1" PVC coated conduit, double-sided pass-through for flat walls	1	2"
F-20-F	2" SW FRP pipe, double-sided pass-through for flat walls	1	3"
F-30-F	3" SW FRP pipe, double-sided pass-through for flat walls	2	4"
F-40-F	4" SW FRP pipe, double-sided pass-through for flat walls	2	5"
F-60-F	6" SW FRP pipe, double-sided pass-through for flat walls	4	8"
F-20L-F	2" LCX pipe, double-sided pass-through for flat walls	1	3"
F-30L-F	3" LCX pipe, double-sided pass-through for flat walls	2	4"
F-40L-F	4" LCX pipe, double-sided pass-through for flat walls	2	5"

Innovative Solutions for Secondary Containment

800-282-7286 | www.sbravo.com