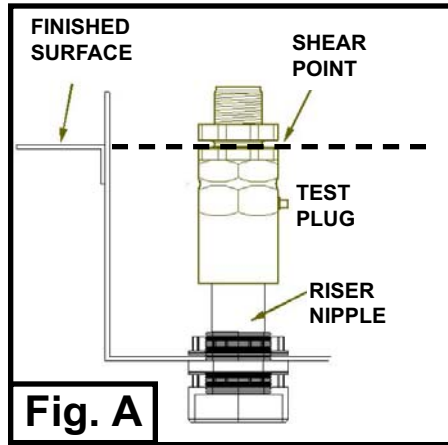


INSTALLATION INSTRUCTIONS

BRAVO B-1 VAPOR RECOVERY SHEAR VALVE

B1-BOSS, CARB OR UL



STEP A ATTACHING THE BRAVO B1 VALVE TO THE RISER NIPPLE

- A1. Assure that the valve shear point is level with the finished surface of the island.
- A2. Determine required nipple length.
- A3. Apply a UL classified fuel-resistant, non-hardening pipe joint sealing compound to the riser nipple.
- A4. Place the valve body in a vise and secure it at the hexagon-section, not the top.
- A5. Attach the riser nipple to the valve body. Use a pipe wrench to tighten until sealed. Remove from vise.

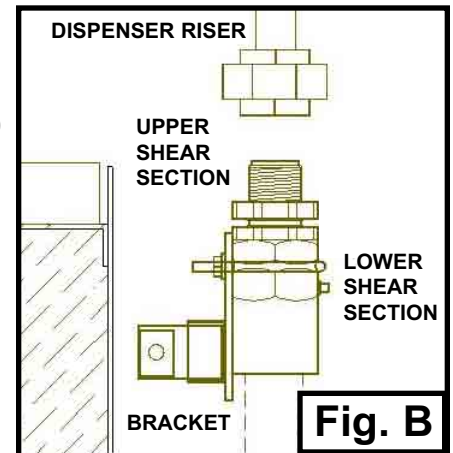
CAUTION

Over-tightening may damage the body resulting in leaks during operation or testing procedures. Avoid damaging the test plug, see (Fig. A)

BRKT-B2 Bracket for 3000 through 9000 Series
BRKT-B1 Bracket for 2000 Series (NOT SHOWN)

STEP B CONNECTING THE VALVE TO THE DISPENSER CONTAINMENT

- B1. Apply pipe sealer to the riser nipple and attach to the dispenser containment vapor pipe.
- B2. To tighten the nipple, place a chain wrench around the hexagon body part and tighten. (Fig. B)



WARNING DO NOT GRASP VALVE FROM SHEAR TOP.

STEP C CONNECTING THE B-1 VALVE TO THE VAPOR RISER.

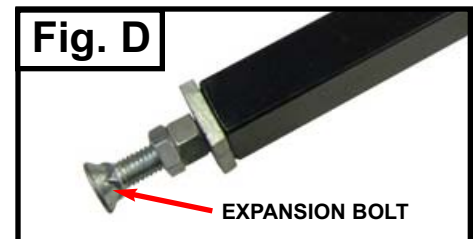
- C1. Follow the recommendations of the dispenser manufacturer.

IMPORTANT The top may shear if it is not secured. Properly secure the upper and lower sections of the shear top while connecting the vapor pipe fittings. (Fig. B) Do not apply force to shear top.

STEP D ATTACHING THE VALVE BRACKET

- D1. Assure the bracket fits flush with the valve.
- D2. Place the U-bolt around valve, if applicable, securing U-bolt or Boss mount to the valve bracket.
- D3. Secure the valve bracket to the wall of the containment box.

NOTE: The B1-Retrofit bracket uses expansion bolts. Brace bracket in position and extend the expansion bolt to the opposite wall, rotate nuts until the bracket is structurally firm. (Fig. D)



STEP E REPLACING SHEAR TOP

NOTICE You do not need to remove the valve body from the dispenser box. DO NOT GRASP THE SHEAR TOP IN THE UPPER HEXAGON AREA.

- E1. Check the valve piping and bracket, tighten or replace if needed.
- E2. Disconnect the shear top from the B-1 valve and the dispenser vapor piping.
- E3. Apply pipe sealant to the threads of the new shear top. Make sure gasket is in good condition.
- E4. Assure the shear top pin engages with the poppet. With a wrench, carefully secure the shear section until it seats against the valve body. (Fig. E)
- E5. Connect the riser to the dispenser vapor piping, following the recommendations of the dispenser manufacturer.

PRESSURE TESTING

If pressure testing is required, conduct the testing according to the piping systems recommended test procedures. 1/4" NPT test port provided. (Max 50 psig)

