

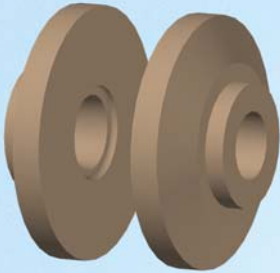


FF-SERIES RIGID FIBERGLASS FITTINGS

FOR SINGLEWALL FIBERGLASS FLAT & ROUND SUMPS

NOW FOR CONDUIT, SIZE OVER SIZE FIBERGLASS PIPE AND AMERON LCX

Flange Fittings for Conduit (FLAT WALLS)

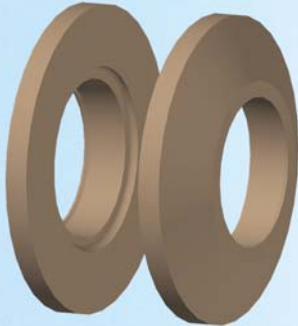


PRODUCT SPECS:

Material UL Fiberglass

PART #	O.D.	Length	Weight	Angle	Engineered for:
F-17-FF:	5"	3"	1.25 lbs	5°	3/4" Hot-dip Galvanized
F-10-FF:	5"	3"	1.25 lbs	5°	1" Hot-dip Galvanized
F-17-FFRR:	5"	3"	1.25 lbs	5°	3/4" RobRoy PVC-Coated
F-10-FFRR:	5"	3"	1.25 lbs	5°	1" RobRoy PVC-Coated

Flange Fittings for Flat Walls



PRODUCT SPECS:

Material UL Fiberglass

PART #	O.D.	Length	Weight	Angle	Engineered for:
F-20-FF:	5"	2.25"	1 lb	5°	2" Size over Size FRP Pipe
F-30-FF:	7"	2.25"	1.75 lbs	5°	3" Size over Size FRP Pipe
F-40-FF:	7.5"	2.25"	2 lbs	5°	4" Size over Size FRP Pipe
F-20-FF-LCX:	5"	2.25"	1 lb	5°	2" Ameron LCX FRP Pipe
F-30-FF-LCX:	7"	2.25"	1.75 lbs	5°	3" Ameron LCX FRP Pipe
F-40-FF-LCX:	9"	3.5"	7 lbs	5°	4" Ameron LCX FRP Pipe

Flange Fittings for Round Walls



PRODUCT SPECS:

Material UL Fiberglass

PART #	O.D.	Length	Weight	Sump Dia.	Angle	Engineered for:
F-20-FF-RND:	5"	2.25"	1.5 lbs	42" or 48"	5°	2" Size over Size FRP Pipe
F-30-FF-RND:	7"	2.25"	2.5 lbs	42" or 48"	5°	3" Size over Size FRP Pipe
F-40-FF-RND:	7"	2.25"	2.5 lbs	42" or 48"	5°	4" Size over Size FRP Pipe
F-20-FF-LCX-RND:	5"	2.25"	1.5 lbs	42" or 48"	5°	2" Ameron LCX FRP Pipe
F-30-FF-LCX-RND:	7"	2.25"	2.5 lbs	42" or 48"	5°	3" Ameron LCX FRP Pipe

Reduce Labor & Material
Minimize Installation Errors



**BUILT LIKE
A TANK**



materials match UST spec UL1316 to ensure longevity and fuel compatibility

NO

- Plastic
- Rubber
- Clamps
- Sealant
- Nuts
- Bolts