

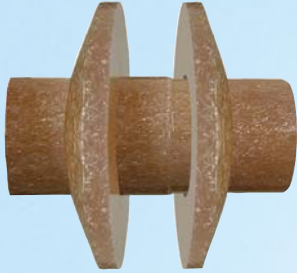


# F-SERIES RIGID FIBERGLASS FITTINGS

## FOR SINGLEWALL FIBERGLASS SUMPS

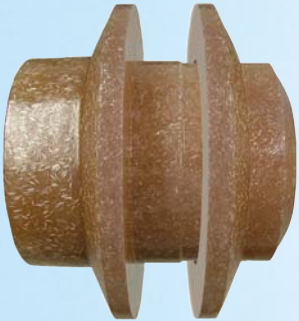
*F-1X-SS / F-1X-RR / F-XX-LS / F-XX-TS* SINGLEWALL FITTING FOR  
FITTING FOR CONDUIT, SMITH™ AND AMERON™ PIPE

### Conduit Series Pass-through Fitting

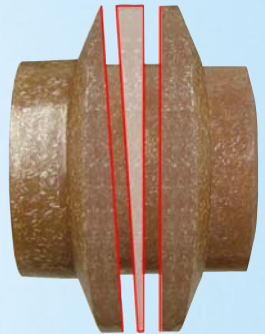


PRODUCT SPECS:					
Material . . . . UL Fiberglass					
PART #	Diameter	Weight	Diameter	Length	Allowed Conduit Type
F-17-SS:	3/4"	3 lbs	5"	5.25"	Hot-dip Galvanized
F-10-SS:	1"	3 lbs	5"	5.25"	Hot-dip Galvanized
F-17-RR:	3/4"	3 lbs	5"	5.25"	"RobRoy™ PVC-Coated
F-10-RR:	1"	3 lbs	5"	5.25"	"RobRoy™ PVC-Coated

### Ameron or Smith Pipe, Taper by Slip



PRODUCT SPECS:					
Material . . . . UL Fiberglass					
PART #	Primary Dia	Secondary Dia	Weight	Fitting Diameter	Length
F-32-TS:	2"	3"	5 lbs	7"	5.25"
F-43-TS:	3"	4"	6 lbs	7.5"	5.25"
F-64-TS*:	4"	6"	11 lbs	11"	5.25"



F-32-TS-ADJ  
Angle-Adjustable  
0° - 5°

### Ameron LCX (Coaxial) Pipe Only



PRODUCT SPECS:					
Material . . . . UL Fiberglass					
PART #	Primary Dia	Secondary Dia	Weight	Fitting Diameter	Length
F-22-LS:	----- 2" LCX -----		5 lbs	7"	5.25"
F-33-LS:	----- 3" LCX -----		6 lbs	7.5"	5.25"

- Reduce Labor & Material
- Minimize Installation Errors
- All "FRP" Construction
- 3rd Party Approved
- Stock ONE fitting for both SMITH / AMERON

\* THIRD PARTY APPROVED ONLY



# NO

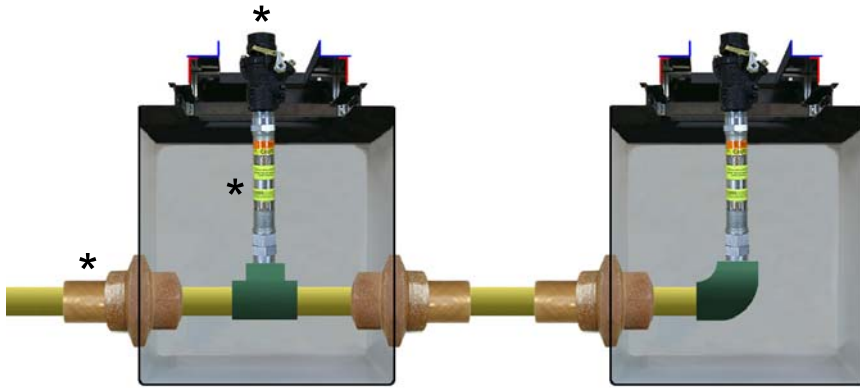
- Plastic
- Rubber
- Clamps
- Sealant
- Nuts
- Bolts

# F-SERIES

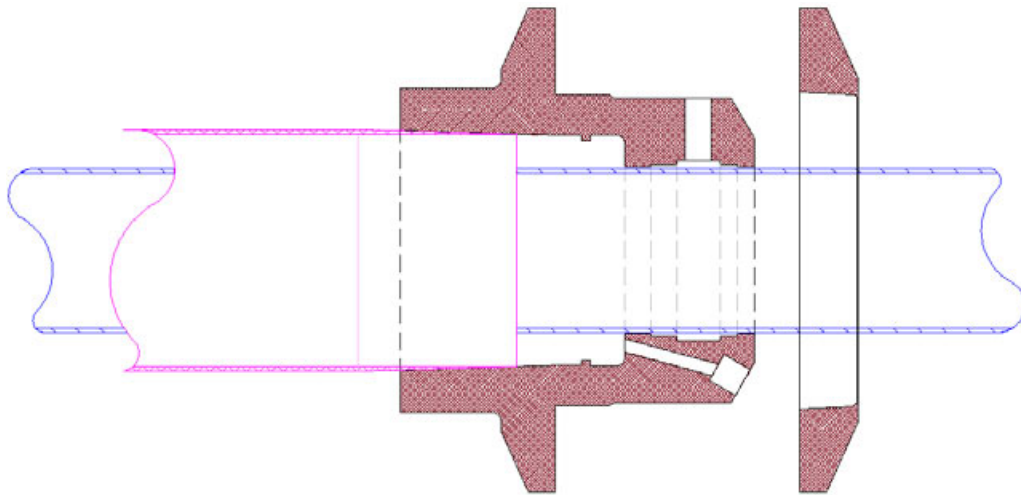
## PASS-THROUGH PIPING

The obvious benefit of this setup drastically reduces the number of tees, elbows, clamshells, glued joints, crossovers and fittings compared to manifold-type installations.

\* ALL SMITH FIBERCAST™ PIPE, BRAVO 9000-B SUMPS, FLEX CONNECTORS AND SHEAR VALVES ARE FOR ILLUSTRATION PURPOSES ONLY.



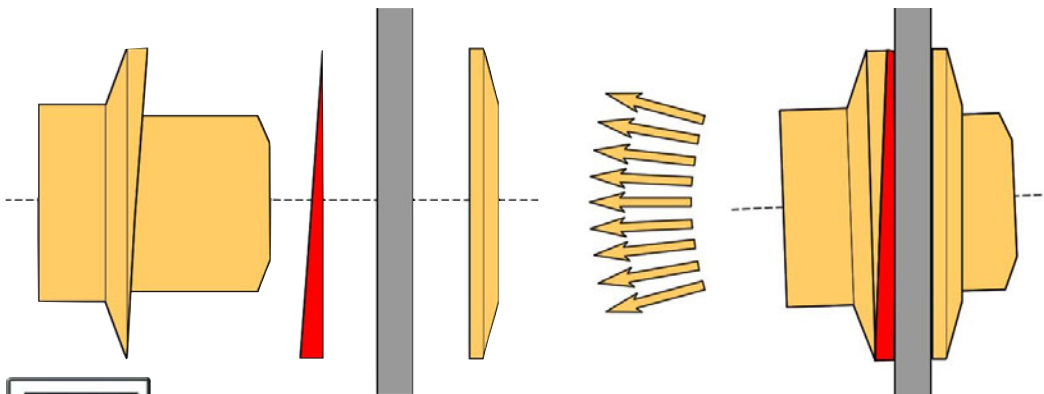
**Optional:** Test Port to test & monitor Secondary Pipe



Primary passes through fitting for testing, while not permanently installed yet.

After primary passes testing, the primary is then sealed to the fitting by adhesive injection

The secondary is then sealed and tested.



The Adjustable Variant of the F-Series Fitting utilizes an additional loose flange machined with a 2.5° angle to match a 2.5° angle on the integrated flange of the body. Rotating these allows a 0° - 5° angle adjustment.



323/888-4133

Patents Pending

S. BRAVO SYSTEMS, INC - 2929 Vail Avenue - Commerce - CA - 90040  
 Fax: 323/888-4123 - E-mail: info@sbravo.com - www.SBravo.com

