

ABOVE GROUND & MARINA STEEL DISPENSER CONTAINMENT

B-8600 SERIES

EPOXY-COATED, GALVANIZED, STAINLESS OR FIBERGLASS-COATED STEEL

Stainless Steel B8600

Structural stabilizer brackets for pressure or suction valves

Float amplification reservoir

Galvannealed & epoxy powder coated

12-gauge steel

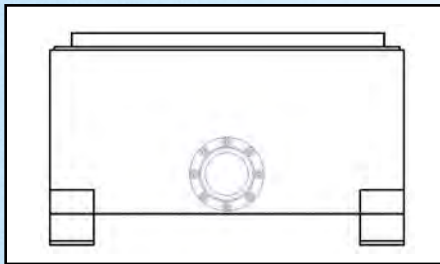


NEW!

- Mounts dispensers plumbed to above ground tanks
- Compatible with mechanical and electronic shutdown devices



When dispensers are upgraded, the B-8600 remains in place. Switch out only the interchangeable, inexpensive upper dispenser frame



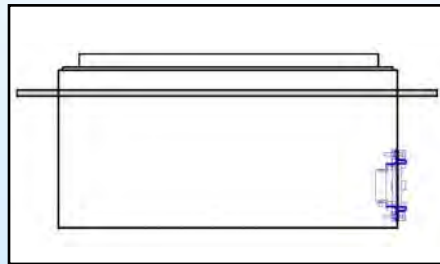
B8600 Standard

Elevated with Bravo Float Trip & penetration extending from side.

- **B8600-B Basic** -
Ships with bracket but no fittings or float cups.

- **B8600 1 Product** -
Ships with one bracket, one float cup and one 1.5", 2" or 3" Flexible fitting loose. Shear valves separate.

- **B8600 2 Product** -
Ships with two brackets, two float cups and two 1.5", 2" or 3" Flexible fittings loose. Shear valves separate.

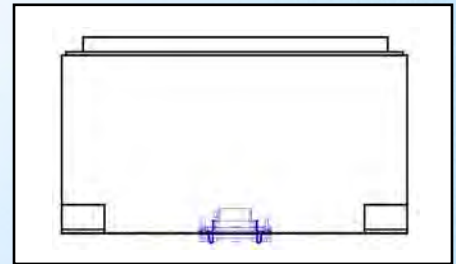


B8600 Flush Mount

Typically inset into dock with side penetration. Flange height is customizable

Flush Mount version has same options/models as the Standard.

B8600 Series Options:
Single Poppet Shear Valve
Double Poppet Shear Valve
Factory-Installed Penetrations
Galvanized coat
Fiberglass coat
And more!



B8600-RETRO

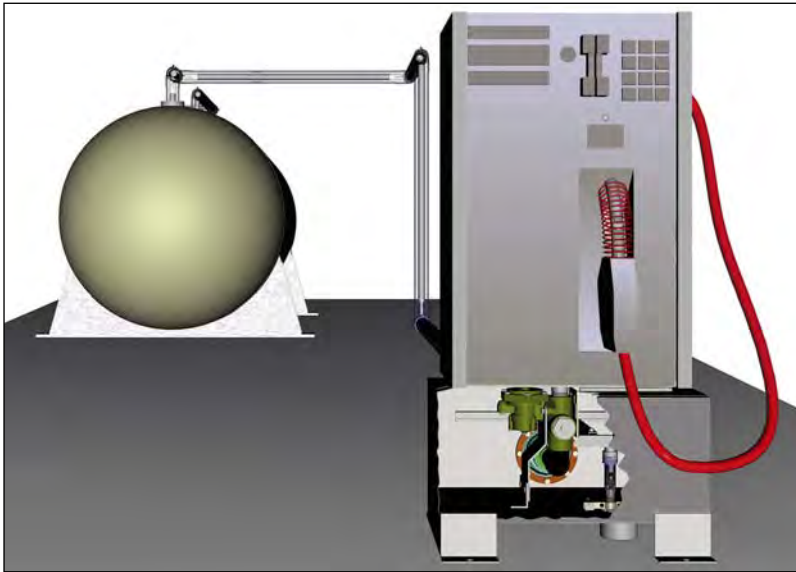
Retrofit model B8600 with Bravo Float Trip

- **B8600 Retrofit 1 Product** -
Ships with one bracket, one single poppet shear valve, one float cup, one 1.5" nipple, one 3x1.5" reducer and one Electrical Fitting (EBS)

- **B8600 Retrofit 2 Product** -
Ships with two brackets, two single poppet shear valves, two float cups, two 1.5" nipples, two 3x1.5" reducers and two Electrical Fittings (EBS)

B-8600

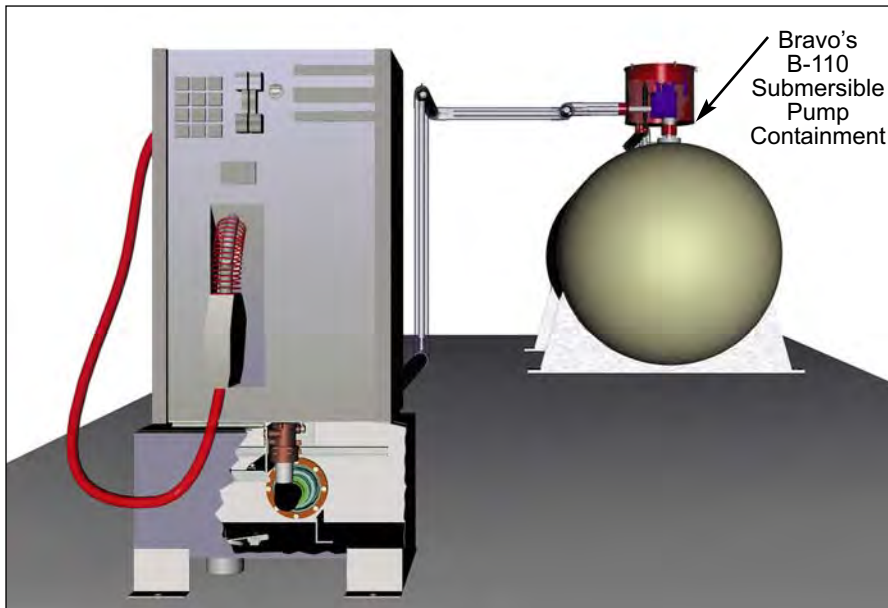
Typical Suction System Installation



OPTIONAL EQUIPMENT:

- EBS field installed electrical penetration with seal for 3/4" and 1" conduit
- FT float trip assembly for pressurized systems
- PS-8600 power shutdown device for suction systems (13 amp relay and explosion proof box)
- FC-8600 fiberglass coat
- B-27SET-3 field installed vapor penetration for 1-1/2" female NPT with 3" secondary adapter
- SV 1-1/2" single poppet product shear valve
- DV 1-1/2" double poppet product shear valve

Typical Pressurized System Installation



PRODUCT SPECIFICATIONS:

- Model No.: B-8600-1P
B-8600-2P
- Material: UL listed powder epoxy-coated steel
- Shipping Weight: 140 lbs.
- Patent: Patent Pending
- Depth: 17-1/2" or Custom
- Length x Width:
- | | |
|---------|-------------|
| Large: | 48"L x 25"W |
| Medium: | 36"L x 25"W |
| Small: | 29"L x 25"W |