

B-7000-WV UDC SUMP

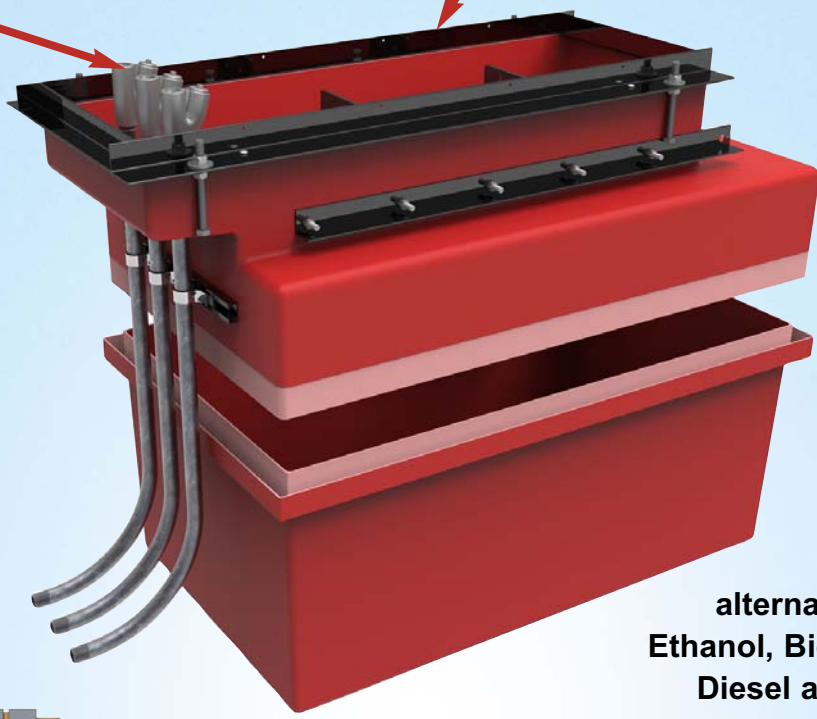
NEW CONSTRUCTION SOLUTION FOR WAYNE-VAC
SPLIT UNDER DISPENSER CONTAINMENT SUMP
 MANUFACTURED OF FIBERGLASS

**EO-FRM:
Electrical
Offset Trough**
Eliminate water intrusion and rubber penetrations, while providing plenty of room for conduits and the Wayne-VAC pump

**Assembled
Dimensions:**
 Width: 28"
 Length: 44"
 Depth: 32"*

* Custom Depths Available

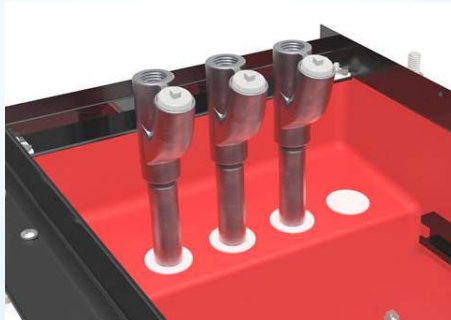
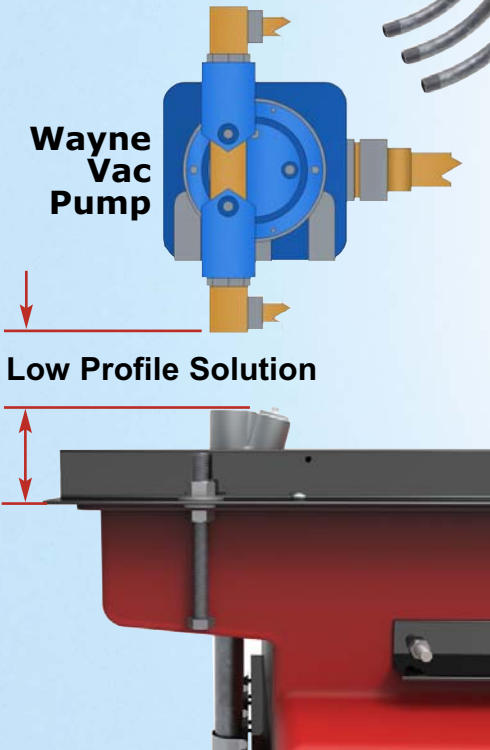
**A Bravo Standard since 1996:
Interchangeable Dispenser Frame**
allows future dispenser upgrades without breaking concrete



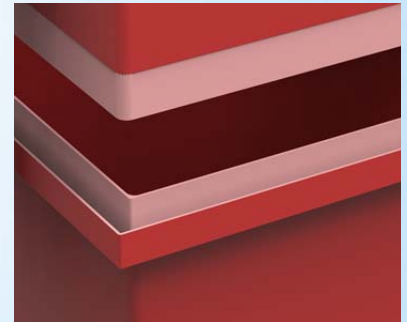
EQ# 727



**Compatible with all
conventional and
alternative fuels including
Ethanol, Biodiesel, Renewable
Diesel and DEF up to 100%**



**Conduits penetrate
raised piles within an
All-Fiberglass trough**



**Sealed with a slurry pour,
the split UDC provides
open access to the
sump interior**

PAT. #5,800,143

OTHER PATENTS PENDING

12A



WWW.SBRAVO.COM
 800-AT-BRAVO

