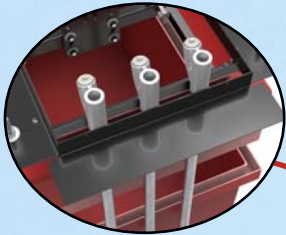


B-7000 REVOLUTION SPLIT

SPLIT (2-PIECE) SINGLEWALL FIBERGLASS SUMP

UNDER DISPENSER CONTAINMENT SUMP
MANUFACTURED OF FIBERGLASS



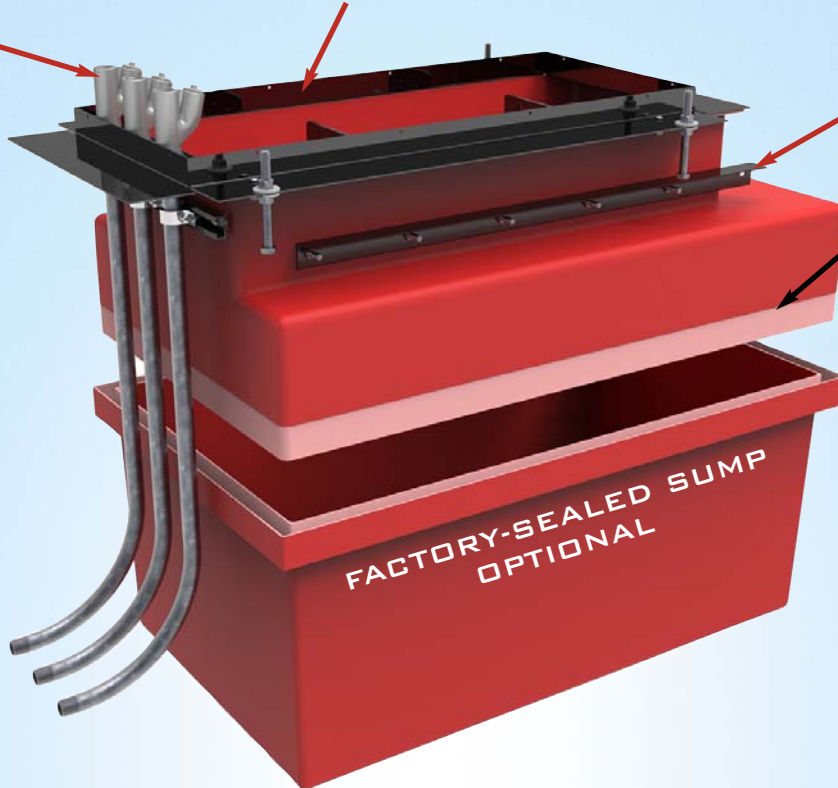
**EO-ADR:
Electrical
Offset Frame**
Avoid electrical
penetrations for
most dispensers



Compatible with all
conventional and
alternative fuels
including ethanol,
biodiesel, renewable
diesel and DEF
up to 100%

A Bravo Standard since 1996:
Interchangeable Dispenser Frame with
integrated water-splash lip allows future
dispenser upgrades without breaking concrete

Factory
Installed
Concrete
Anchoring

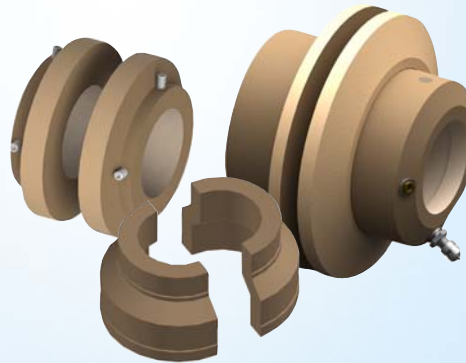


Field
Adjustable top
Cut down from
30" to 24" depth

Install, inspect
& test entry
fittings with
open and
unobstructed
access, then
seal top half to
the base

FEATURES:

- > Field Adjustability
- > Easy pour in place seal
- > Compatible with all fuels
- > Interchangeable Dispenser Frame
with Electrical Offset
- > Also available Factory-Sealed



RECOMMENDED:
FF-Series or F-Series FRP Fittings

EQ# 727



PAT. #5,800,143

PATENTS PENDING 13A

* Custom Depths Available



WWW.SBRAVO.COM
800-AT-BRAVO

