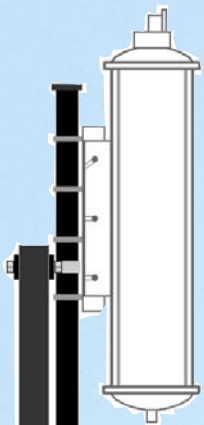


B500/600 Transition Upgrades
REINFORCED SUMP AND RACKS FOR VEEDER CCVP
DESIGNED FOR BOTH SINGLEWALL AND DOUBLEWALL SUMPS



RS-500-VRC

Included:

- 2x Vertical racks
- 2x Cross members
- 6x 2" pipe clamps
- All nuts/bolts and washers



Structural Concrete Anchor Flange



SingleWall / DoubleWall Models: **List**
 B500-600-VRC-ADR [adder]..... \$ 253

Reinforced Rack System:
 RS-500-VRC-S..... \$ 730
 RS-500-VRC-L..... \$ 940

Retrofit Reinforced Rack System:
 RS-500-VRC-R-S..... \$ 1413

Third Party Approved
 AB-2481 Compliant



NOTES FOR EXISTING VENT SUMPS SUPPORTING THE VEEDER CCVP

If at an existing site a Veeder Root Canister has been installed on a standard RS-500 Rack System then you are not compliant with Bravo Warranty Terms and the installation is a potential safety hazard. Also, if the Canister has been installed on the RS-500-VRC Rack System with an inadequate concrete footing then this is also not compliant and a potential safety hazard. To resolve either of these situations, the RS-500-VRC-R must be installed as a retrofit OR a B500-VRC or B600-VRC

WARNING

If at an existing site a Veeder Root Canister has been installed to a RS-500-VRC Rack System and concreted appropriately but the manifold connections of the risers are below the topmost cross brace of the rack system then this is an unsafe installation and a safety hazard. To resolve a situation where this is the case the RS-VRC-BRKT must be ordered and installed or you must re-manifold your vent lines above the highest cross brace and install provided pipe fasteners to each riser.

ORDERING NOTES

A) If at a new site a Veeder Root Canister is to be installed WITH or WITHOUT an enclosure: **[Distributor must ask the contractor if the Canister will be installed]** The B500-VRC or B600-VRC model numbers must be ordered **WITH** the RS-500-VRC rack system. These are adders and must be added to each Vent sump or rack system. See page 1.

B) If the Veeder Root Canister must be installed at a site with a standard B500-JP or B600 vent sump already installed in the ground:
The RS-500-VRC-R must be ordered. Installation Instructions must be reviewed by the contractor/installer to ensure proper clearance for the rack is available. The instruction manual for the VRC-R is available at www.sbravo.com/install

C) If the Veeder Root Canister must be installed at a site with a B500-JP or B600 vent sump already installed in the ground and it is determined that the RS-500-VRC-R Retrofit Rack System is not applicable for installation:
Bravo Systems offers professional engineering review on a per-site basis. This service includes on-site review by Bravo Systems Engineering Staff, written review and evaluation, third party structural calculations for that site, and wet-stamped final documentation with step-by-step installation guidelines from Bravo Systems Engineering department. Minimum charge for this service is \$5500.00.

Alternative #1

Situation: Standard B500/B600 Vent Sump is ordered and in production and/or time is critical for order.

Solution: RS-500-VRC rack can be used. Customer must be notified that a specific concrete profile must be followed per engineering specs. Verification of acknowledgement by signature.

Limitation: This solution does not support an Enclosure for the canister.

Alternative #2

Situation: Option A, B or C is not possible.

Solution: Break concrete carefully and re-concrete around vent sump per engineering specs to accommodate the heavy duty RS-500-VRC rack.

Limitation: This solution does not support an Enclosure for the canister.