

B-409-D-AB Retrofit Tank Sump

DOUBLEWALL TANK SUMP WITH CLOSED BOTTOM

42" OR 48" DIAMETERS WITH COVERS INCLUDED

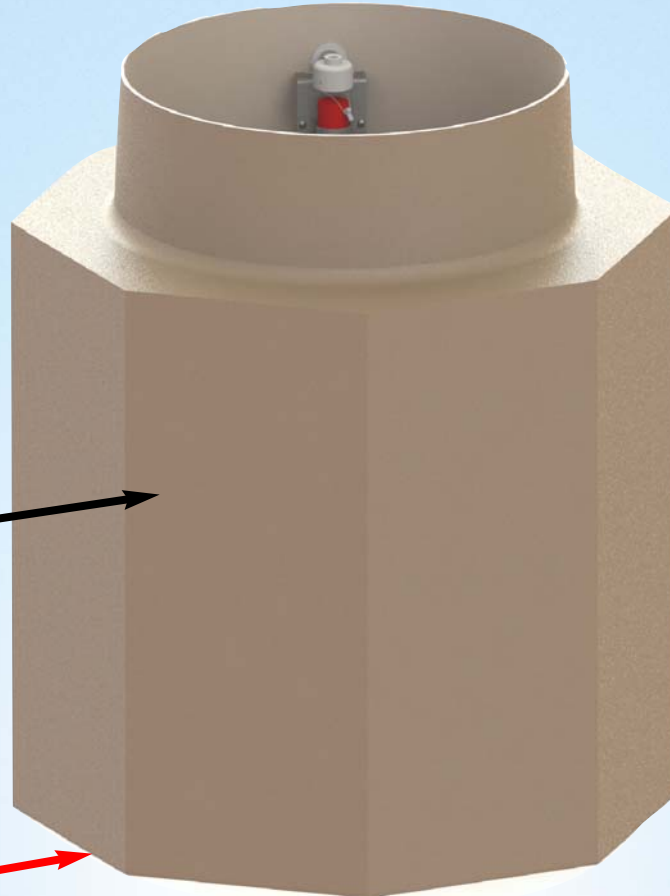
MANUFACTURED OF FIBERGLASS



AB-2481 Compliant
Third Party Approved

Eight Sided Sump
Great for 45° & 90°
Fiberglass Fittings

Monitored sump with
closed bottom ensures
AB-2481 compliance and
environmental security



Compatible with
and warranted for
continuous exposure
to all common fuels
and alternative fuels
including ethanol
and biodiesel.



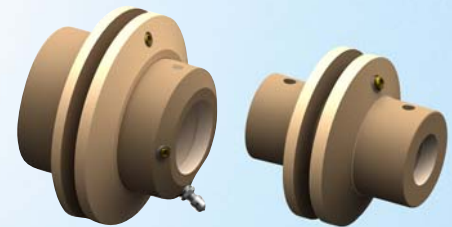
All sumps
ship under
20"Hg for
continuous
testing



EQ# 615

FEATURES:

- > Tank-Spec Fiberglass Construction
- > AB-2481 Compliant Monitored DoubleWall
- > Ships under a continuous 20"Hg vacuum test
- > Octagonal walls with monitored closed bottom
- > 4-wall variant available as the B-830-D-AB series
- > 42" or 48" Diameters
- > 32" or 36" Diameter reducers
- > Includes Manometers and interstitial fluid



RECOMMENDED:
F-Series-D FRP Fittings Only

Patent# 6,823,886 - Other Patents Pending

13A



WWW.SBRAVO.COM
800-AT-BRAVO



made
in USA

