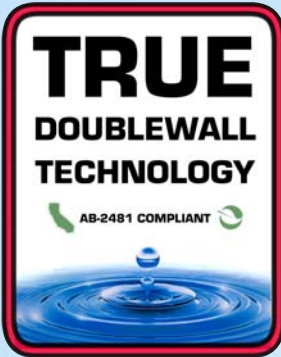


# B-400-DB-MW Tall-Collar Tank Sump

DOUBLEWALL SUMP (1-PIECE) FOR MODERN WELDING TANKS

42" OR 48" DIAMETERS WITH 32" OR 36" REDUCERS

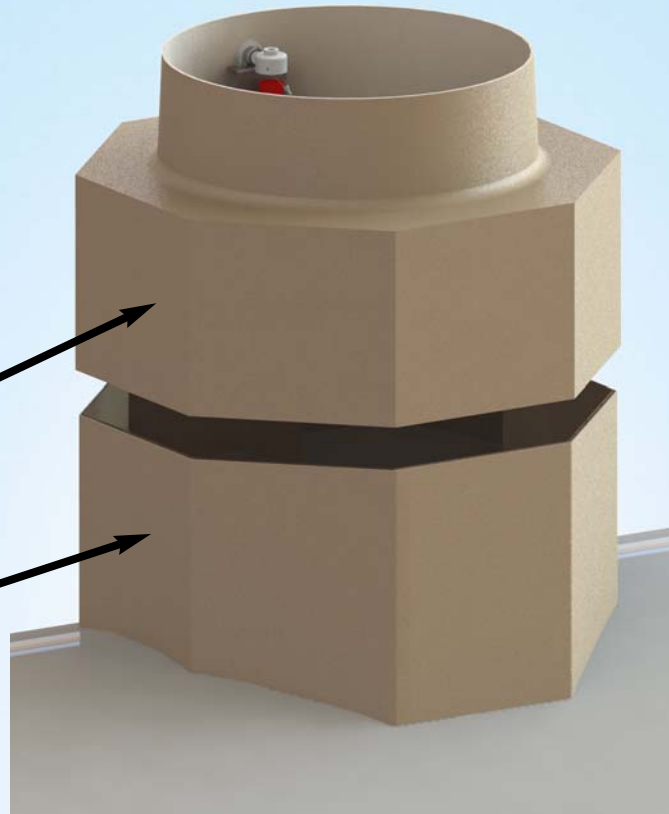
MANUFACTURED OF FIBERGLASS



AB-2481 Compliant  
Third Party Approved

Eight Sided Sump  
Great for 45° & 90°  
Fiberglass Fittings

With a "Tall Collar"  
installed by your Tank  
manufacturer, begin  
piping as soon as  
your tank arrives



Compatible with  
and warranted for  
continuous exposure  
to all common fuels  
and alternative fuels  
including ethanol  
and biodiesel.



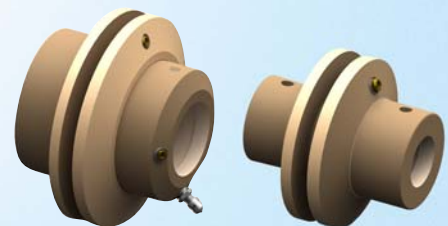
All sumps  
ship under  
20"Hg for  
continuous  
testing



**EQ# 615**

## FEATURES:

- > Tank-Spec Fiberglass Construction
- > AB-2481 Compliant Monitored DoubleWall
- > Ships under a continuous 20"Hg vacuum test
- > Large flat walls for more entry fittings
- > Octagonal walls with "Tall Collar" mount
- > Begin piping as soon as the tank arrives
- > 42" or 48" Diameters
- > 32" or 36" Diameter reducers
- > Includes Manometers and interstitial fluid
- > Height adjustable in the field



**RECOMMENDED:**  
F-Series-D FRP Fittings Only

Patent# 6,823,886 - Other Patents Pending

13A



WWW.SBRAVO.COM  
800-AT-BRAVO

