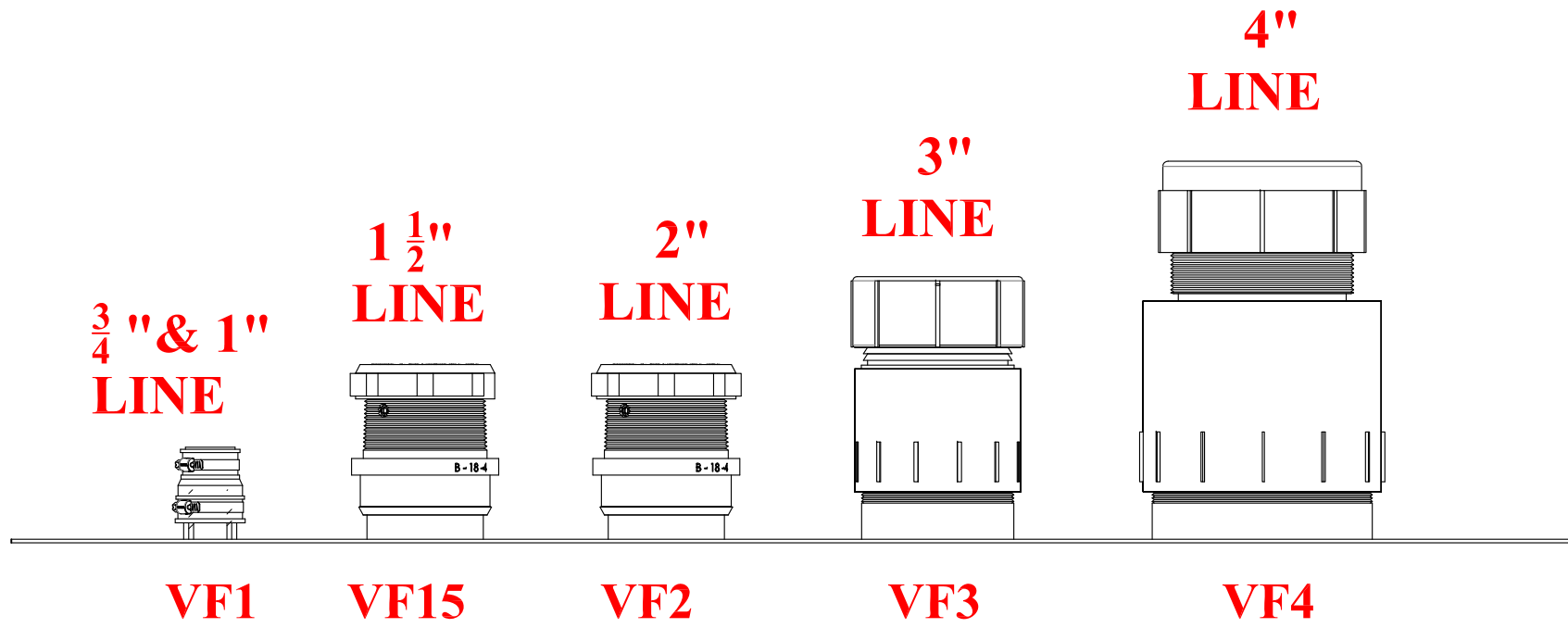


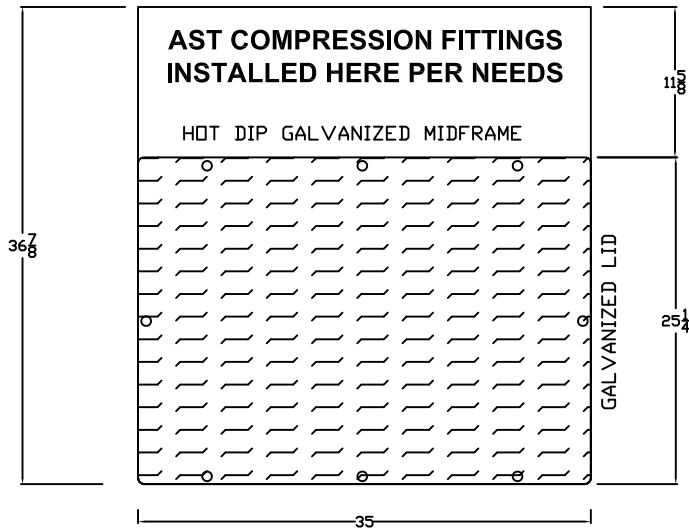
AST FITTING OPTIONS

FOR B-600 COMMERCIAL SERIES

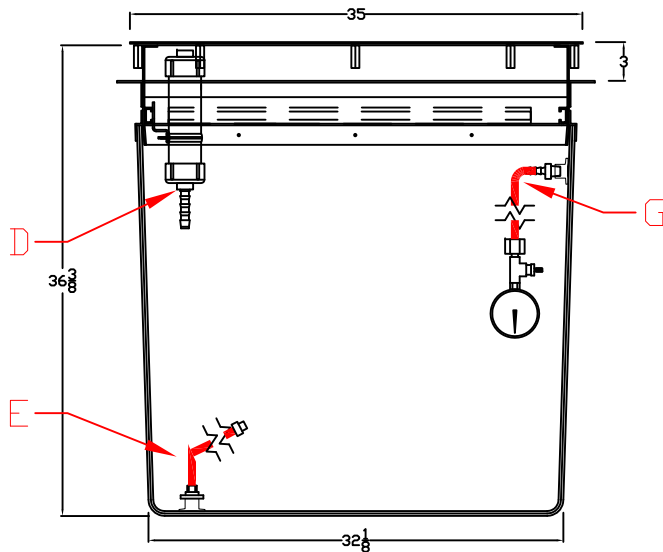


NOTE: ALL FITTING MODELS SHOWN ABOVE ARE THREADED ONTO A FACTORY WELDED MNPT NIPPLE (excluding VF1).

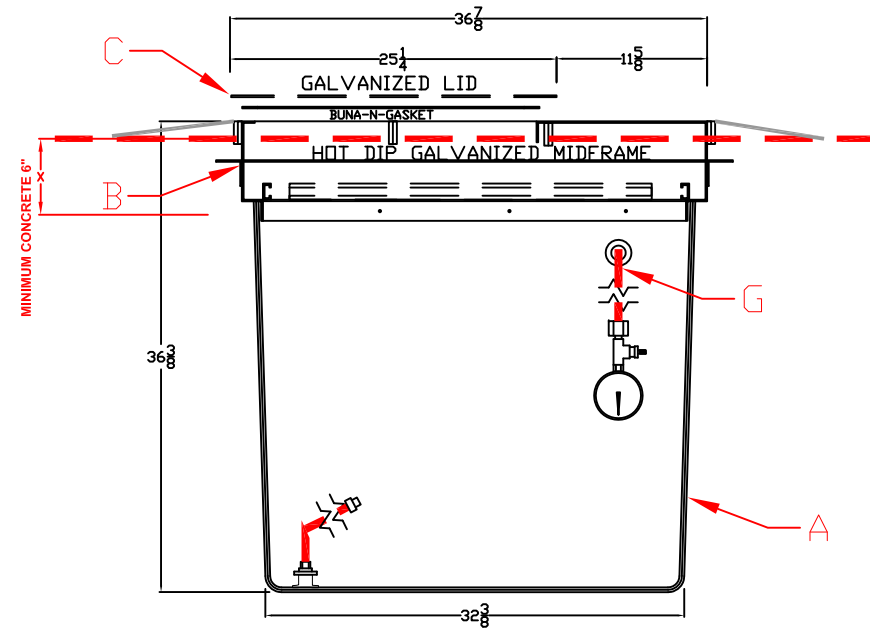
BILL OF MATERIALS		
NO.	QTY.	PART DESCRIPTION:
A	1	3x3x3 FRP DOUBLE WALL TRANSITION SUMP
B	1	HOT DIP GALVANIZE MID FRAME
C	1	GALVANIZE LID
D	1	MANMETER ASSEMBLY
E	1	TUBING ASSEMBLY
F	5	GAL INTERSTITIAL FLUID
G	1	GUAGE ASSEMBLY



PLAN VIEW



FRONT VIEW



SIDE VIEW

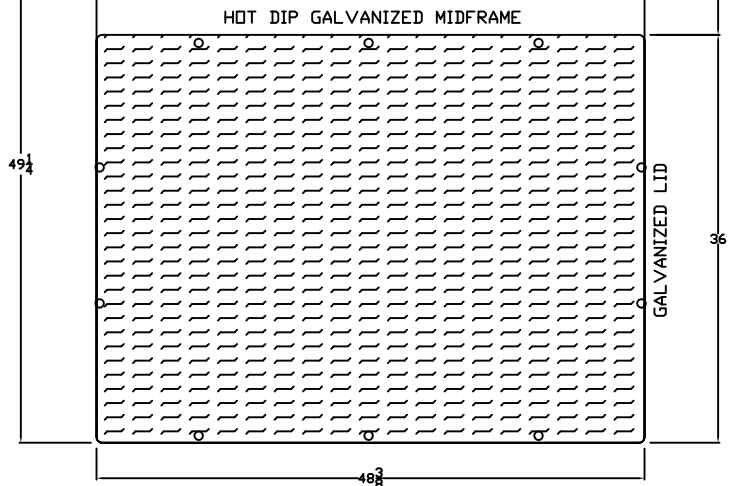
CONFIDENTIAL

WWW.SBRAVO.COM

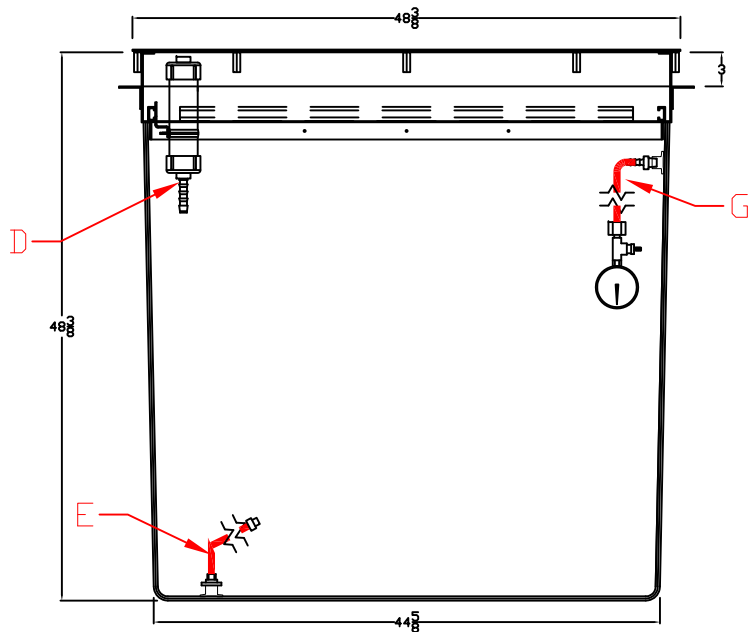


S. BRAVO SYSTEMS INC.		
DATE: 4/24/06	DWG NO. B-630-D-AB	REV.
MODEL: DOUBLEWALL COMMERCIAL 3'x3'x3' TRANSITION SUMP		NAME: JS

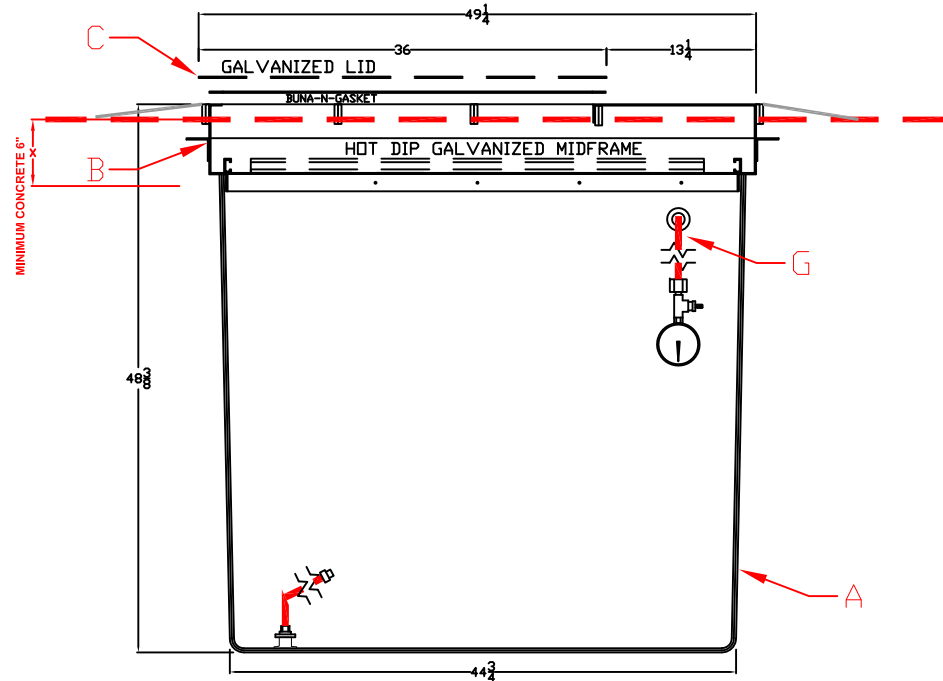
**AST COMPRESSION FITTINGS
INSTALLED HERE PER NEEDS**



PLAN VIEW



FRONT VIEW



SIDE VIEW

BILL OF MATERIALS

NO.	QTY.	PART DESCRIPTION:
A	1	4x4x4 FRP DOUBLE WALL TRANSITION SUMP
B	1	HOT DIP GALVANIZE MID FRAME
C	1	GALVANIZE LID
D	1	MANDMETER ASSEMBLY
E	1	TUBING ASSEMBLY
F	7	GAL INTERSTITIAL FLUID
G	1	GUAGE ASSEMBLY

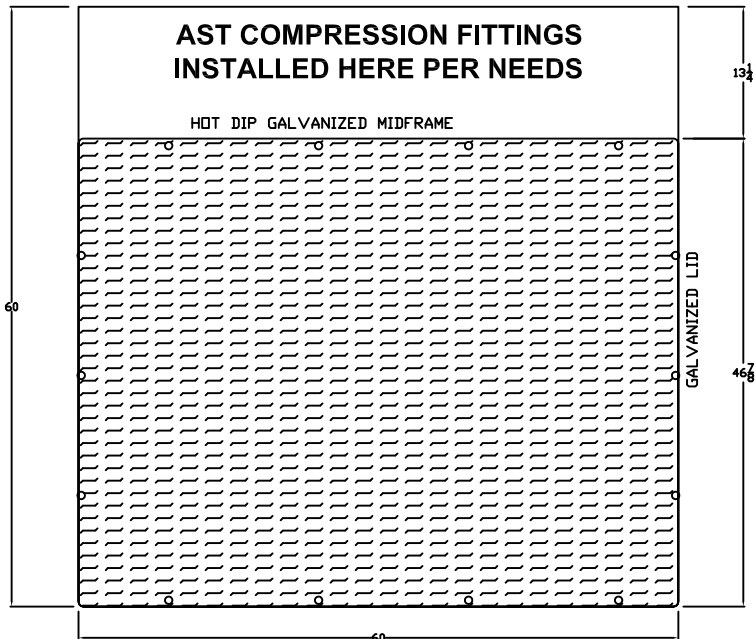
CONFIDENTIAL

WWW.SBRAVO.COM

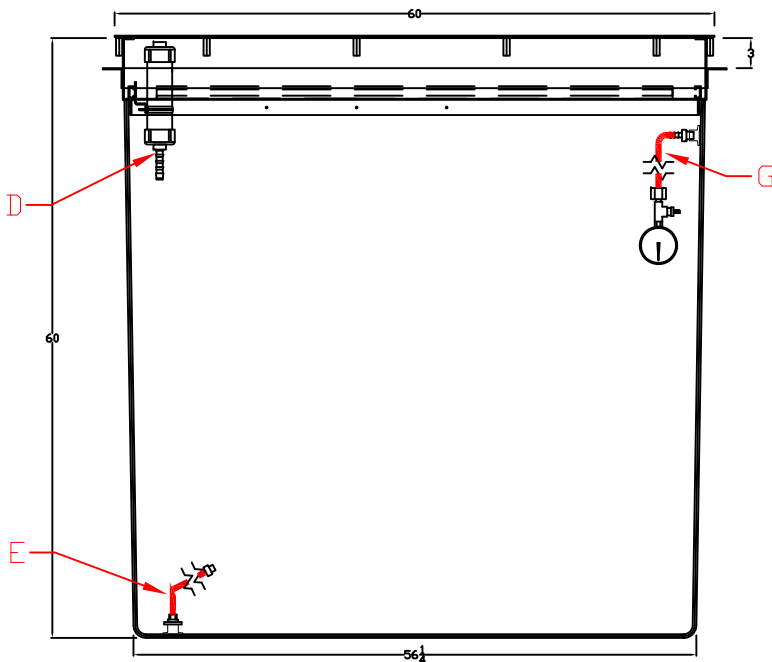


S. BRAVO SYSTEMS INC.

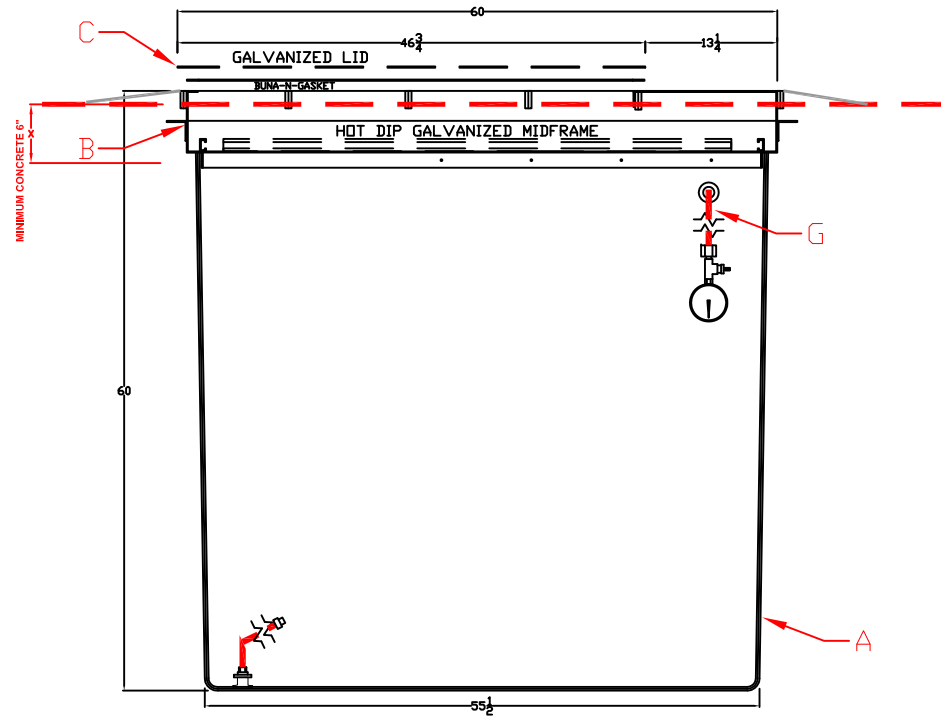
DATE: 8/2/06	DWG NO. B-640-D-AB	REV.
MODEL: DOUBLEWALL COMMERCIAL 4'x4'x4' TRANSITION SUMP		NAME: JS



PLAN VIEW



FRONT VIEW




SIDE VIEW

BILL OF MATERIALS		
NO.	QTY.	PART DESCRIPTION
A	1	5x5x5 FRP DOUBLE WALL TRANSITION SUMP
B	1	HOT DIP GALVANIZE MID FRAME
C	1	GALVANIZE LID
D	1	MANDMETER ASSEMBLY
E	1	TUBING ASSEMBLY
F	8	GAL INTERSTITIAL FLUID
G	1	GUAGE ASSEMBLY

CONFIDENTIAL

WWW.SBRAVO.COM

	S. BRAVO SYSTEMS INC.	
	DATE: 8/2/06	DWG NO. B-650-D-AB
MODEL: DOUBLE WALL COMMERCIAL 5'x5'x5' TRANSITION SUMP		NAME: JS